

SPECIFICATION FOR APPROVAL

產品確認書/製品仕様書

| | |
|-----------------------|--|
| FILE SERIAL NO./文件序號: | XSG200722150008-L01 |
| CUSTOMER / 客 戶: | |
| ARTICLE / 品 名: | SWITCHING POWER SUPPLY |
| MODEL NO. / 機種型號: | XSG1500800 |
| PARAMETER / 規 格: | 15V 0.8A Level VI |
| CERTIFICATE/認證: | CB,UL,CUL,FCC,PSE,CE,GS,SAA,RCM,C-tick,UKCA,ROHS |
| ISSUE DATE / 發行日期: | 2020/7/22 |

Please to sign back after you confirm

承認書確認後請回簽一份

この仕様書をご確認とご署名の上、対象の営業窓口にご返信いただきますよう宜しくお願い致します。

| CUSTOMER AUTHORIZED 客戶確認 | | |
|-----------------------------|------------|-------------|
| Approved by | Checked by | Prepared by |
| | | |

| SUPPLIER AUTHORIZED 供方確認 | | |
|-----------------------------|------------|-------------|
| Approved by | Checked by | Prepared by |
| 李麗敏 | 賀子豐 | 張文娟 |

*感謝您的支持，我們十分珍惜每次合作機會

*Thank you for your support, we will treasure the opportunity to cooperate with you

| Rev.版本 | Description of change/ 變更內容描述 | | Changed Date 日期 | Approved |
|--------|-------------------------------|-----------|--------------------|----------|
| | Before(變更前) | After/變更後 | | |
| A | Original Release(初次發行) | | 2007/8/26 | 李麗敏 |
| B | Label updated(標貼版本變更) | | 2010/6/20 | 王曉 |
| C | Certificates updated(證書更新) | | 2018/1/22 | 李麗敏 |
| | | | | |
| | | | | |



* Make practical and safe power supply, Be enterprise with honesty and responsibility

* 提供實用安全的電源，做誠信負責的企業

* 実用的、安全な電源を提供し、誠実と信用、責任を持つ企業。

Table of Content(目錄)

| | |
|---|---|
| 1.SAFETY STANDARD / 安規標準 | 3 |
| 2.INPUT FEATURE / 輸入特性 | 3 |
| 3.POWER SUPPLY OUTPUT VOLTAGE / CURRENT FEATURE/ 供電器輸出電壓 / 電流的特性 | 3 |
| 4.IELECTRIC WITHSTANDING STRENGTH(HI-POT) / 絕緣介電強度 (耐壓) | 4 |
| 5.PROTECTION FEATURE / 保護特性 | 4 |
| 6.ENVIRONMENTAL CONDITIONS / 環境條件 | 4 |
| 7.EMC STANDARDS / 電磁相容性標準 | 5 |
| 8 RELIABILITY AND QUALITY CONTROL / 可靠性及品質控制 | 5 |
| 9.WEIGHT / 重量 | 5 |
| 10.MECHANICAL REQUIREMENT / 結構參數 | 5 |
| 11.INSULATION RESISTANCE / 絕緣阻抗 | 5 |
| 12.LEAKAGE CURRENT / 漏電流 | 6 |
| 13.MAJOR MEASURE EQUIPMENT / 主要測量設備; VERIFIED BY THE THIRD LAB/外校 | 6 |
| 14.PRODUCT OUTLINE DIMENSION / 產品外觀尺寸 | 7 |
| 16.DC CORD / 輸出 線材 | 8 |
| 17.RATING LABEL / 銘牌 | 9 |
| | |
| | |
| | |
| | |
| | |
| | |
| | |
| | |
| | |
| | |
| | |
| | |
| | |
| | |
| | |
| | |

| | | | |
|----------------|----------|-------------|------------|
| EDITION | C | PAGE | 2/9 |
|----------------|----------|-------------|------------|

ELECTRICAL PERFORMANCE / 電器性能

1.SAFETY STANDARD / 安規標準

- 1.1 The green mode power supply shall be certified by the following international regulatory standards: 充電器應符合下列的國際標準:

| Certificate 證書 | Country 國家 | Standard/安規標準 | Certificate 證書 | Country 國家 | Standard/安規標準 |
|-------------------|-------------------------|---|-------------------|---------------|--|
| ■ UL/CUL | USA/CA 北美 | UL/CSA62368-1; UL/CSA60950-1; | ■ FCC | USA | FCC Part 15 Sub-part B |
| ■ UKCA | United Kingdom 英國 | BS EN 62368 | ■ CE | Europe 歐洲 | EN55032;EN55024; EN55020;EN61000; EN55014; |
| ■ CB | Global 全球 | IEC62368;IEC60950; IEC61558;IEC60335 | ■ UKCA | Korea 韓國 | BS EN62368-1 |
| ■ PSE | Japan 日本 | J60950-1; J61558 | ■ SAA/RCM | AU 澳洲 | AS/NZS 60950 |

2.INPUT FEATURE / 輸入特性

- 2.1 INPUT VOLTAGE RANGE: 90Vac to 264Vac. 輸入電壓範圍可以從90Vac到264Vac.
- 2.2 RATED INPUT VOLTAGE: 100Vac to 240Vac. 額定輸入電壓從100Vac到240Vac.
- 2.3 INPUT FREQUENCY RANGE: 47Hz to 63Hz. 輸入頻率範圍從47Hz到63Hz.
- 2.4 INPUT CURRENT: 0.6A max.&100-240Vac. 最大輸入電流0.6A(輸入條件100-240Vac)
- 2.5 INRUSH CURRENT: 35A max. at 100-240Vac input for a cold start at 25 °C.在准開機條件下，最大浪湧電流不超過35A (輸入條件100-240Vac).
- 2.6 EFFICIENCY: higher than 83% at 100-240Vac input and output full load. 效率高於83% (輸入100-240Vac 和輸出滿載條件).
- 2.7 No-Load Input Power Dissipation/輸入空載功率損耗: Input 115Vac or 230Vac,output no load, the input power loss is less than 0.1W. 輸入115/230V交流，在空載時，輸入功耗小於0.1W.

3.OUTPUT/輸出特性

| RATED OUTPUT / 額定輸出 | SPEC. LIMIT / 規格限定 | | REMARK / 備註 |
|-----------------------------|--------------------|------------|--|
| | Min. value | Max. value | |
| Output regulation / 輸出電壓規格 | 14.25VDC | 15.75VDC | 15V±5% |
| Output load / 輸出負載規格 | 0.0A | 800mA | |
| Ripple and Noise / 輸出紋波及雜訊 | — | <150mVp-p | 20MHz Bandwidth 10uF Ele. Cap.& 0.1uF Cer. Cap |
| Output Overshoot / 輸出過沖幅度 | — | 10% | |
| Line regulation / 電壓調整率 | — | ±1% | |
| Load regulation / 負載調整率 | — | ±5% | |
| Turn-on delay time / 開機延遲時間 | — | 3000mS | |
| Hold up time / 關機維持時間 | 10mS | — | Input voltage:115Vac |
| | 20mS | — | Input voltage:230Vac |

| | | | |
|---------|---|------|-----|
| EDITION | C | PAGE | 3/9 |
|---------|---|------|-----|

4.4 IELECTRIC WITHSTANDING STRENGTH(HI-POT) / 絕緣介電強度 (耐壓)

Primary to Secondary AC3000V, 10mA,1 minute for type test, 3 second for production.

一次側對二次側：AC3000V, 10mA標準測試1分種，量產測試3秒鐘.

5.PROTECTION FEATURE / 保護特性

5.1 OVER—CURRENT PROTECTION / 過電流保護：

The green mode power supply shall be hiccup when any output operating in overload condition(set@ Max load 120~180%) under any line condition for an indefinite period of time. The power supply shall be self—recovery when the fault condition is removed.

在任何時候任何輸入條件，當輸出操作在超載條件最大電源的（120~180%）時，電源供應器將進入打嗝模式，當故障被移走後，電源要能自動恢復到正常。

5.2 SHORT—CIRCUIT PROTECTION / 輸出短路保護：

The power supply shall be hiccup and no damage shall occur when any output operating in a short circuit condition under any line condition for an indefinite period of time. The power supply shall be self—recovery when the fault condition is removed.

在任何時候，任何輸入條件下，當輸出操作在短路情況下，電源供應器將進入打嗝模式，當故障消失後，電源要能自動恢復正常。

6.ENVIRONMENTAL CONDITIONS / 環境條件

6.1 OPERATING / 操作條件：

The power supply shall be capable of operating continuously in any mode without performance deterioration in the following environmental conditions.

在下列環境條件下，電源供應器要能夠連續操作在各種模式，且不能造成性能的退化。

6.1.1 Operating Temperature: -25℃~40℃ 環境測度：-25℃~40℃

6.1.2 Relative Humidity: 10%~90% 相對濕度：10%~90%

6.1.3 Vibration: 1.0mm, 10—25Hz, 15 minutes per cycle for each axis (X, Y, Z)

6.1.4 Cooling: The power supply will operate with convection cooling. Blocking of vents must not cause damage to the power supply..

電源供應器將操作在對流冷卻的環境下，即使將通風口阻塞電源也不允許有任何損傷發生。

6.2 NON—OPERATING / 非操作條件：

The power supply shall be capable of withstanding the following environmental conditions extended periods of time, without sustaining electrical or mechanical damage and subsequent operational deficiencies.

電源供應器要能夠長期的經受下列的環境條件，且不允許有電氣級機械方面的損傷和併發的操作的缺失

6.2.1 Storage Temperature: -30℃~70℃ 環境溫度：-30℃~70℃

6.2.2 Relative Humidity: 10%~90%相對濕度：10%~90%

6.2.3 Color of case and cable / 外殼及線材顏色：Black / 黑色

| | | | |
|----------------|----------|-------------|------------|
| EDITION | C | PAGE | 4/9 |
|----------------|----------|-------------|------------|

6.2.4 Vibration and Shock / 振動和衝擊

The power supply shall be designed to withstand normal transportation vibration per MIL –STD –810D,method 514 and procedures X, as it s mounted in the chassis assembly and packed for shipping.

電源供應器出貨的包裝設計，均要能承受正常運輸的振動，並符合MIL–STD–810D方法514 和程式 X。

6.2.5 Dropping Packed / 跌落試驗：

X-Y-Z direction 90cm,one time with each direction

X-Y-Z三個方向高度0.9m每個方向各一次

7.EMC STANDARDS / 電磁相容性標準

7.1 EMI STANDARDS / EMI 標準

The power supply met the radiated and conducted emission requirements for FCC CLASS B, EN55022 CLASS B.

本電源供應器符合輻射及傳導要求，滿足FCC CLASS B, EN55022 CLASS B.

7.2 EMS STANDARDS / EMS 標準

The power supply shall meet the following EMS standards: 本電源供應器滿足下列EMS標準

7.2.1 EN61000–4–2: 1995 / A1: 1998 Electrostatic Discharge(ESD)

7.2.2 EN61000–4–3: 1996 / A1: 1998 Radiated Electromagnetic Fields(RS)

7.2.3 EN61000–4–4: 1995 Electrical Fast Transient / Burst(EFT)

7.2.4 EN61000–4–5: 1995 Lighting Surge Attachment. Line to Neutral: 2KV

8 RELIABILITY AND QUALITY CONTROL / 可靠性及品質控制

8.1 BURN–IN / 老化

The power supply shall undergo a minimum of 4 hours Burn –In test under full load at 40°C ~ ±5°C

電源應在40°C ~ ±5°C和滿載條件下老化4 小時。

8.2 COMPONENT DERATING / 元件溫度要求

Semiconductor junction temperatures shall not exceed the manufacturer’s maximum thermal rating.

半導體結溫不允許超過其製造商要求的最大溫度值。

9.WEIGHT / 重量

The weight of the power supply shall be about 150 g. 電源的重量大約為150g。

10.MECHANICAL REQUIREMENT / 結構參數

The power supply size: L63.8*W38.5*H40mm.外殼尺寸： L63.8*W38.5*H40mm

11.INSULATION RESISTANCE / 絕緣阻抗

Input to output: 50M OHM(500VDC)輸入對輸出50兆歐姆（500VDC）

| | | | |
|----------------|----------|-------------|------------|
| EDITION | C | PAGE | 5/9 |
|----------------|----------|-------------|------------|

ELECTRICAL PERFORMANCE / 電器性能

12.LEAKAGE CURRENT / 漏電流

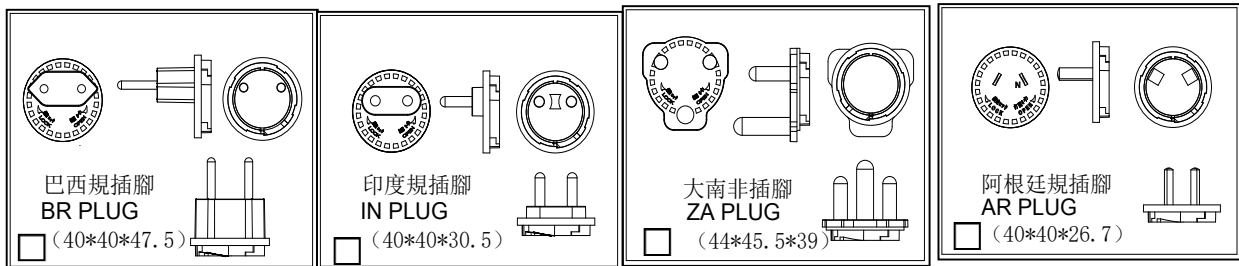
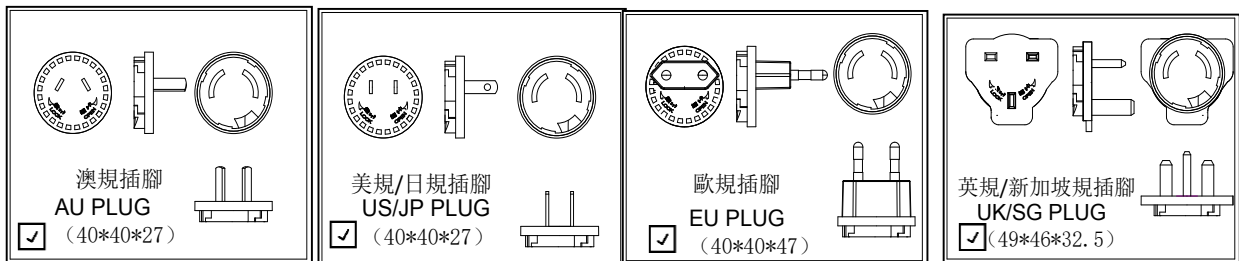
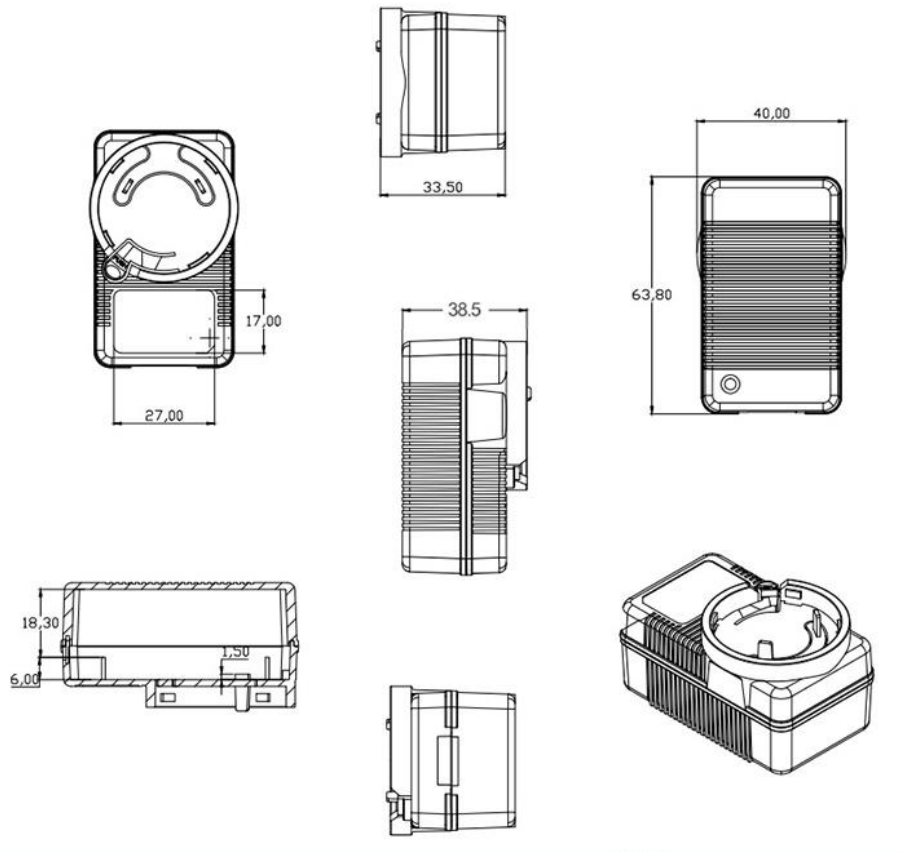
The leakage current shall be less than 0.25mA for class II when power supply is operated maximum input voltage and maximum load. 當電源供應器操作在最大輸入及最大負載情況下，其漏電流應小於0.25mA, 滿足class II等級。

13.MAJOR MEASURE EQUIPMENT / 主要測量設備; VERIFIED BY THE THIRD LAB/外校

- | | | | |
|---|--|--------------------------|---|
| A | AC SOURCE / 交流輸入充電器: AFC-500W,校準頻次: 1次/年 | <input type="checkbox"/> | ✓ |
| B | POWER METER / 充電器功率計: CHROMA 2100,校準頻次: 1次/年 | <input type="checkbox"/> | ✓ |
| C | ELECTRONIC LOAD / 電子負載: PRODIGIT 3310C,校準頻次: 1次/年 | <input type="checkbox"/> | ✓ |
| D | OSCILLOSCOPE / 存儲示波器: TDS-2012B,校準頻次: 1次/年 | <input type="checkbox"/> | ✓ |
| E | DIGITAL MULTIMETER / 數字式萬用表: Fluke 4.5,校準頻次: 1次/年 | <input type="checkbox"/> | ✓ |
| F | DC POWER / 直流輸入充電器: WYK-6030,校準頻次: 1次/年 | <input type="checkbox"/> | ✓ |
| G | HI-POT TESTER / 耐壓測試儀: LANKE 7112,校準頻次: 1次/年 | <input type="checkbox"/> | ✓ |
| H | INSULATION RESISTANCE TESTER / 絕緣電阻表: YD2681A,校準頻次: 1次/年 | <input type="checkbox"/> | ✓ |

| | | | |
|----------------|----------|-------------|------------|
| EDITION | C | PAGE | 6/9 |
|----------------|----------|-------------|------------|

PRODUCT OUTLINE DIMENSION / 產品外觀尺寸(mm)

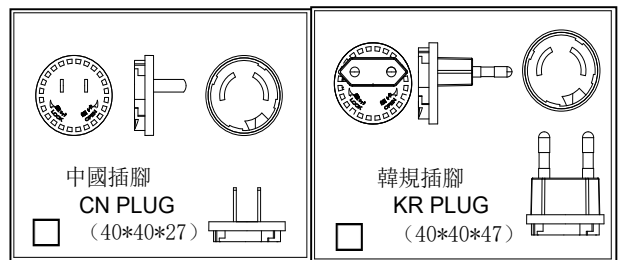


Material/材料: PC

Brand/品牌: GE

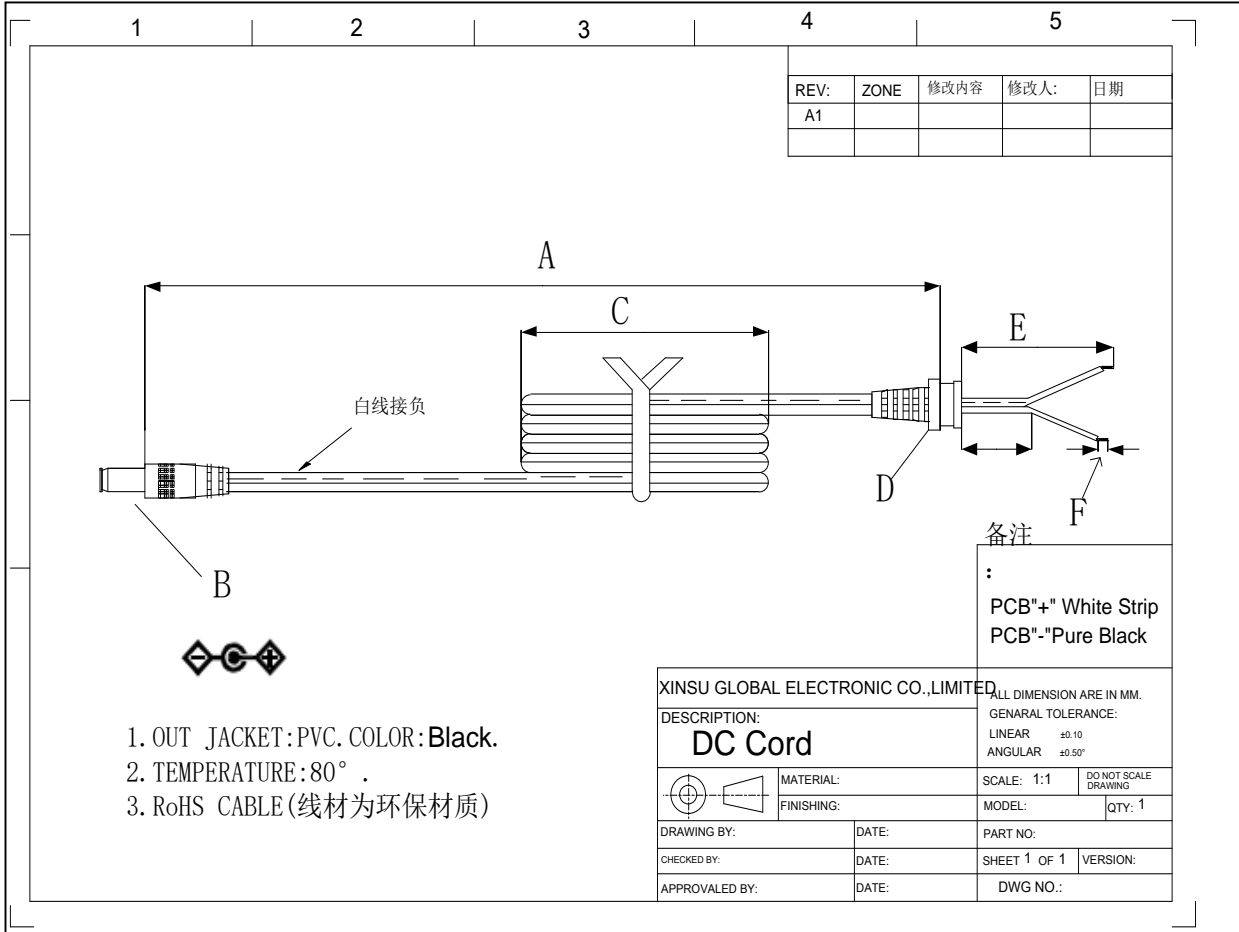
Fireproof Class/防火等級: UL94V-0

Color/顏色: Black/黑色



| | | | |
|---------|---|------|-----|
| EDITION | C | PAGE | 7/9 |
|---------|---|------|-----|

DC CORD / 輸出線材

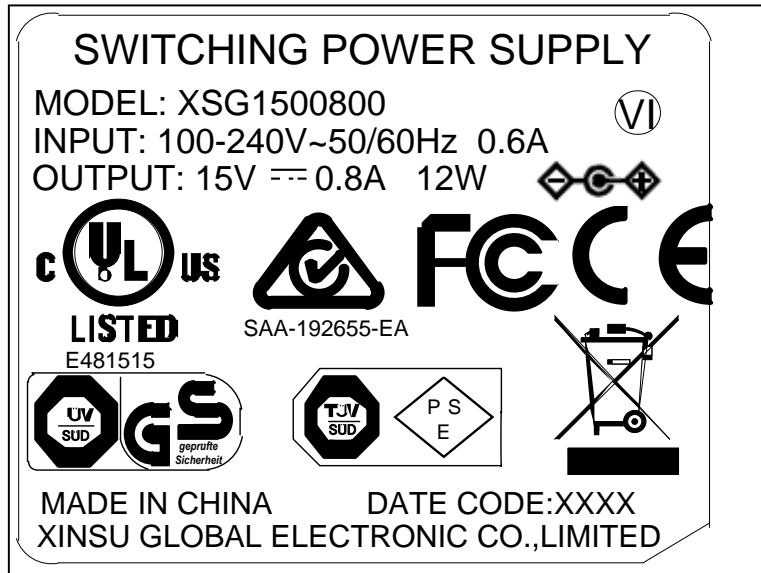


Cable Specification/線材規格

UL 24AWG*2C 2468 L=1.2M Black 80'C

| Item No | Part Name (部件名稱) | Description (描述) |
|---------|------------------------------|---|
| A | Length of DC cord(DC線長度) | 1.2M |
| B | Size of DC connector (DC頭尺寸) | 5.5*2.5*12MM, Inner Positive Outer Negative |
| C | Length of coil (線包長度) | 70MM±10 |
| D | SR NO(線卡編號) | XYX-XL008 |
| E | Length of inlet wire (出線長度) | 30MM±1 |
| F | Tinned length (吃錫長度) | 4MM±1 |

| | | | |
|----------------|----------|-------------|------------|
| EDITION | C | PAGE | 8/9 |
|----------------|----------|-------------|------------|



Print/印刷

Laser Carving/鐳雕

- 1.Silver text on black background 黑底銀字
- 2.Material: PET 底材為消銀龍.
3. Clear Printing, Wipe Resistance 絲印清晰，耐擦拭.
- 4.Gum Permanent 永久背膠.
- 5.Meet Requirements of Environmental Protection 符合環保要求

| | | | |
|----------------|----------|-------------|------------|
| EDITION | C | PAGE | 9/9 |
|----------------|----------|-------------|------------|